

“Social Inclusion for At-Risk Children and Their Families”

Linking parents and professionals to resources in their communities

Funded by: Social Development Partnerships Program, Social Development Canada, Government of Canada

A partnership between:



Principal Investigators/Project Directors:

Dr Hillel Goelman, Director, The CHILD Project,
Senior Scholar, Human Early Learning Partnership
Dana Brynelsen, Provincial Advisor, Infant Development
Program of BC

Dr Clyde Hertzman, Director, Human Early Learning
Partnership

Co-Investigators:

Dr Anne Synnes, Dr Jill Houbé,
BC Children's and Women's Health Centre
Dr Anne Klassen, Mc Master University

Research/Project Team

Dr Lara El Khatib, HELP & UBC

Zhen Li, HELP & UBC

Sarka Lisonkova, BCCH & UBC

Dr Mari Pighini, HELP & UBC

Mary Stewart, Online Course (UBC)

Lisa Benson and Ginny Chu (Administrative and Logistics support) UBC

Invited community agencies/programs in the Lower Mainland:

Infant Development Programs of BC, *in consultation with*
Aboriginal Infant Development Program of BC
Supported Child Development Program of BC, representatives from
Vancouver Coastal and Fraser Health Authorities, among others.



Presented by:

Lara El-Khatib, Ph.D., Project Coordinator
Mari Pighini, Ph. D., Research Coordinator

February 2009



**Background information: HELP,
The CHILD Project, and
Infant Development Program of BC**





Figure 2: Towards a System of Early Intervention Services in BC

Research and Evaluation

"NICU" Study (SDPP)

Canadian Neonatal Network
BC Neonatal Follow-up Programme
Universal Developmental Surveillance
Screening for infant neuromotor delays
PCMG Research (through IDP)
IDP Case Studies (SDPP)

University Partners

Faculty in

- *Developmental Paediatrics*
- *Neonatology*
- *Centre for Healthcare, Innovation and Improvement*
- *Early Childhood Education*
- *Developmental Psychology*
- *Nursing*
- *Rehabilitation Sciences*
- *Health Care and Epidemiology*
- *Measurement and Evaluation*
- *Educational Counselling Psychology and Special Education*

Community Partners

- **IDP of BC**
- AIDP
- SCDP
- DDA
- BC C & W Health Centre
- CCCH
- Children First Initiative?
- Fraser Valley Local Health Authority?
- BC Healthy Child Alliance (Special Needs)?

Government & Funding Partners

- ❖ BC MCFD
- ❖ BC Minister of State for Child Care
- ❖ Michael Smith Foundation for Health Care Research of BC
- ❖ **Government of Canada Department of Social Development**
- ❖ Government of Canada SSHRC
- ❖ UBC Hampton Fund

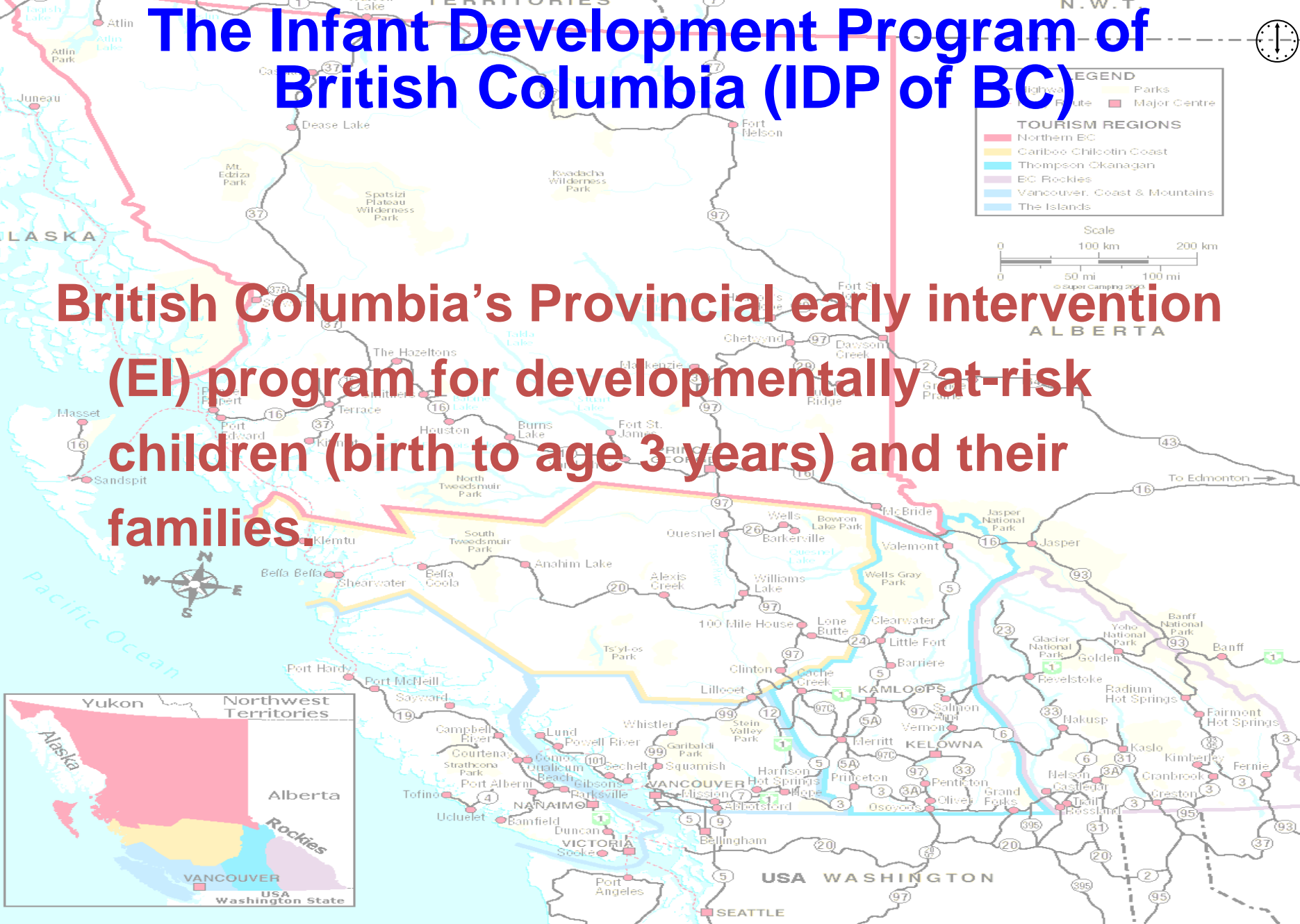
Training, Outreach and Program Development

- IDP/SCDP Certificate and Diploma Program
- "Assessment Workshop" (ECEBC-IDP- CHILD/HELP- SCDP- PRTC)
- **SDPP (Deliverables/ Training Component).**
- Early Hearing, Vision and Dental Screening and Registry Programs
- Development of province-wide information and case management system.
- Early Years Conference
- Partnership project: The Early Intervention Consortium → 8 modules/ 15-hr instruction - disability related training (0-6 yrs) of disability related training on 15 hours each models of instruction 0-6 (EI Consortium)



The Infant Development Program of British Columbia (IDP of BC)

British Columbia's Provincial early intervention (EI) program for developmentally at-risk children (birth to age 3 years) and their families.



Vision and objectives

- All children and families, regardless of ability or disability, should have access to quality programs and supports that will enable them to participate to the fullest extent possible in the widest possible range of early childhood activities
- All children and families, should have access to a seamless continuum of services
- The barriers to the social inclusion of children who are developmentally delayed or are at risk for developmental delays should be identified and addressed



RESEARCH COMPONENT:

- The “NICU” study: *“An Interdisciplinary Study of the Trajectories of At-Risk Infants and Children”*
- Preliminary findings
- The “IDP of BC” study: *“A Multiple Case Study of the Children and Families in the Infant Development Program of British Columbia”*
- Findings

The findings and recommendations from these studies have resulted in...



DELIVERABLES COMPONENT:

- The creation of a wide range of educational and informational print and electronic materials targeted at...
 - ✓ *parents of children at risk for developmental delays and with identified special needs,*
 - ✓ *in-service and pre-service professionals in early intervention*
 - ✓ *the general public*



Done in consultation with members of the Provincial Steering Committee of the IDP of BC, IDP staff, and with professionals working in early child/special needs/community development and with parents,

And,

In collaboration with the IDP of BC and working with members of communities of BC's Lower Mainland to finalize the dissemination stage (January to June 2009)



Why is this project important?

- A need to identify the barriers to social inclusion in Lower Mainland communities
- A need for a centralized engine that can connect families to resources in their communities
- A need for a seamless continuum of services



Who benefits?

- Families of children with established developmental/health conditions
- Families of children who are at risk for developmental delays
- The professionals who work with these children and families



Through an interdisciplinary partnership and cross-sectoral collaboration of individuals representing families, communities, universities, professionals and different levels of government, in BC.' Lower Mainland this project provides...

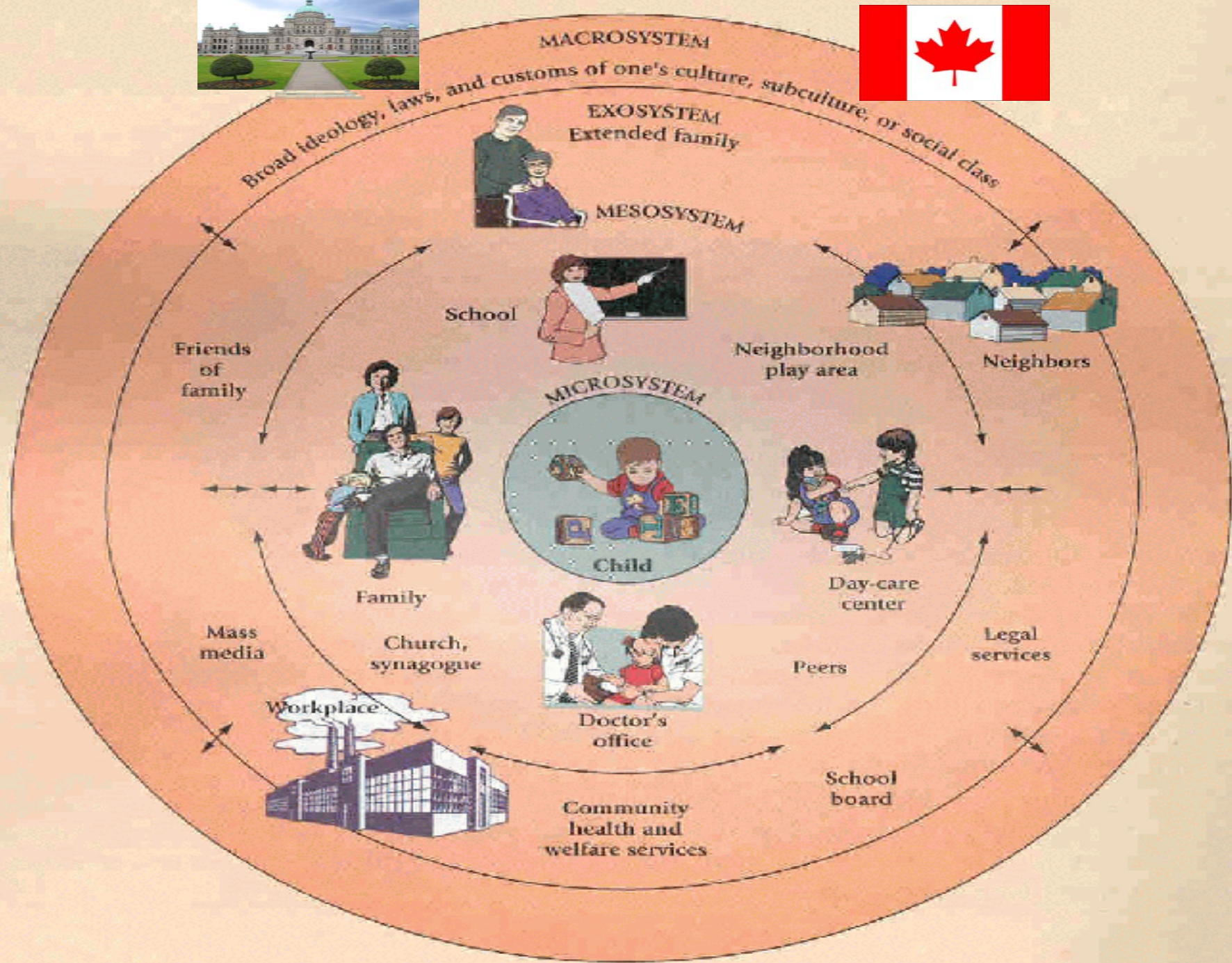
...

Tools, professional resources and services available for parents and service providers that are:

- Area specific (BC Lower Mainland)*
- Geographically linked*
- Conceived within an ecological framework (Bronfenbrenner)*

...that looks like this:





The Parent Questionnaires

Available in English, Farsi,
Punjabi, Spanish, Traditional Chinese, Simplified Chinese,
and Vietnamese

<http://www.earlylearning.ubc.ca/SDPP/phpQ/fillsurvey.php?sid=3>



– The Micro System: “You and Your Child” Questionnaire

-The five developmental areas:

-Chronological

-Brief descriptions of developmental areas

– The “Wonder That Is Your Child” Section

<http://www.earlylearning.ubc.ca/SDPP/phpQ/fillsurvey.php?sid=3#yourchild>

– The Meso System: “You and Your Family” Questionnaire

– The Exo System: “You and Your Community”
Questionnaire



The Service Provider Questionnaires

<http://www.earlylearning.ubc.ca/SDPP/phpQ/fillsurvey.php?sid=8>



-
- The Meso System Questionnaire
 - The Exo System Questionnaire
 - Proposed: Adding the Micro System Questionnaire





The Healthcare Service Locator /Services Provided

http://www.earlylearning.ubc.ca/SDPP/healthcare_locator.htm





General Resources

<http://www.earlylearning.ubc.ca/SDPP/generalresources.htm>



-
- Libraries
 - The library at Sunny Hill/BC Children's Hospital
 - Other libraries
 - Professionals
 - Professional Associations
 - What they do
 - Local and national coordinates



- General

- Typical child development websites

- Atypical child development websites

- For parents, children and teens

- Resources and materials

- For online shopping and ideas



Specific Disorders and Conditions



<http://www.earlylearning.ubc.ca/SDPP/specificdisorders.htm>

-
- Angelman syndrome
 - ADHD
 - Autism
 - Brain injuries
 - Cerebral palsy
 - Cleft palate
 - Deaf/blind
 - Down Syndrome
 - Dyslexia



-
- Epilepsy
 - Fetal Alcohol Spectrum Disorder
 - Gifted
 - Hearing impairments
 - Language and communication disorders
 - Learning disabilities
 - Prematurity/Low Birth Weight
 - Spina bifida
 - Tourette syndrome
 - Visual impairments





List of books

<http://www.earlylearning.ubc.ca/SDPP/books.htm>

-
- Reference books
 - Books for children
 - Woodbine House series
 - Sensory processing issues/difficulties
 - General (atypical development)
 - Inclusion
 - Speech/language/communication
 - Gifted
 - Learning disabilities





List of DVDs

<http://www.earlylearning.ubc.ca/SDPP/dvds.htm>

The “Questions For Your Doctor” Section



<http://www.earlylearning.ubc.ca/SDPP/questionsfordoctors.htm>



Other Deliverables



Training Component

Online Course in Early Childhood Intervention:

- **Module 1:** Typical and Atypical Development
- **Module 2:** Who Are The Children With Special Needs?
- **Module 3:** The Early Intervention Professionals
- **Module 4:** How It All Ties Together and What It Means To Parents and Professionals



Printed Materials

- Binders: mirroring what is available on the website
 - Multi-lingual
 - For those who do not have access or have limited access to the internet
 - For service providers conducting home visits
 - Available through the internet in pdf format:
www.earlylearning.ubc.ca/SDPP/binder.htm
- Brochures and flyers for community agencies and programs in the Lower Mainland



On display!

Dissemination

- Infant Development Program, Aboriginal Infant Development Program, Supported Child Development Program, Aboriginal Supported Child Development Program
- Public Health Units
- Ministry of Children and Family Development
- Professional Organizations
- ECE/ECD Committees
- School Counsellors
- Libraries
- Community Centers/Neighbourhood Houses
- Parent Groups/Associations
- Family Doctors, Pediatricians and Other Specialists
- Others, including additional government and non-government agencies working with children and families, e.g. First Call of BC, Family Services Programs and Multicultural Workers Associations
- ...



REPORT TO DATE

- Over 30 community and academic presentations
 - Sharing online and printed resources and materials
 - 105 binders printed for community agencies/programs/schools in the Lower Mainland



Please see material for display!

-
- Website access nationally and internationally
 - almost 500,000 hits since it was first developed in 2006 (questionnaires uploaded in 2007)
 - On average visits: 15 minutes
 - Repeat visits: 27.3% of users
 - Preferred page: Child Development - Physical



Quotes



“ I am really enjoying this resource when conducting home visits with parents; if they have a developmental concern about one of their children, we can go over the child development questionnaires and fill it with them; later on, in my office I can navigate the website and find more information that is relevant for this family.” (family counsellor)



“My sister did find the binder useful; she found information (about autism for her child) that was not in another resource that the (staff at hospital) had given her” (sibling of parent of young child).



Future Directions

- Expand the project to include the entire province of British Columbia
- Expand the age range covered to include children who are between the ages of 6 and 12 years
- Expand the resource/material/specific conditions and disorders section
- Expand the applied course into an academic course and/or program in early childhood intervention



Wish List

- Continue research investigating the extent and effectiveness of these resources in supporting parents and service providers to obtain the resources and services they require
- Obtain ongoing funding to maintain and provide periodic updates to the online and printed resources created





www.earlylearning.ubc.ca/sdpp.htm

For more information, feedback and/or comments,
please contact:

Lara El-Khatib, Ph.D., Project Coordinator

(604) 827-5552

lara.el-khatib@ubc.ca

Mari Pighini, Ph.D., Research Coordinator

(604) 827 5513

mari.pighini@ubc.ca



Hillel Goelman, Ph D, Project Director
Hillel.goelman@ubc.ca

Dana Brynelsen, IDP Provincial Advisor
infantdv@interchange.ubc.ca





We are grateful to Social Development Canada, to the Human Early Learning Partnership, The CHILD Project and the Infant Development Program and to all the community agencies and programs for their invaluable support in the successful completion of this project

Heartfelt thanks!



The Social Inclusion Project Team